

Drain plugs for Ex e application




Drain Plug

- Effectively draining moisture out off an enclosure.
- Prevents damages, such as condensation water.
- Allows the air inside the enclosure to breathe with the surrounding atmosphere.

Technical Details

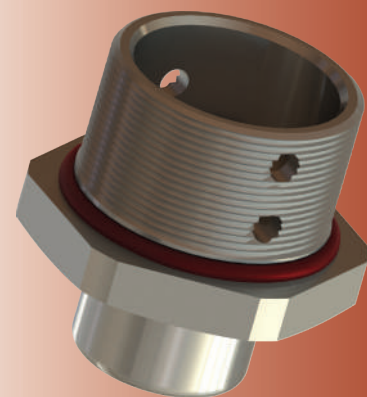
Material	Body ,Cap Membrane O-Ring	Brass, Brass Nickel Plated, Stainless Steel 316L Bronze Silicone
Ingress Protection Rating		IP 66
Operating Temperature	Seal Material	Silicone
Ex e/tb		-60°C to +85°C
Equipment For		• Gas & Dust potentially explosive atmospheres.
Suitable for use in		Group II Gas Group IIC ZONE1/ZONE2 Group III Dust Group IIIC ZONE21/ZONE 22
Equipment Marking		Ex II 2GD Ex eb IIC Gb Ex tb IIIC Db IP66
Marking Example *		BMD BDRV... CE 0722 Ex II 2GD Ex eb IIC Gb Ex tb IIIC Db Ta -60°C to +85°C IP66 IMQ 13 ATEX 030X IECEx IMQ 14.0003X
Type Protection		Ex eb ; Ex tb
Thread Type		• Metric (M) ISO Pitch 1,5 • Npt (N) ANSI ASME B1.20.1
Accessories		• Lock Nut
Remarks		• O-ring available in Metric outer threads. • Accessories must be ordered separately.

Approvals

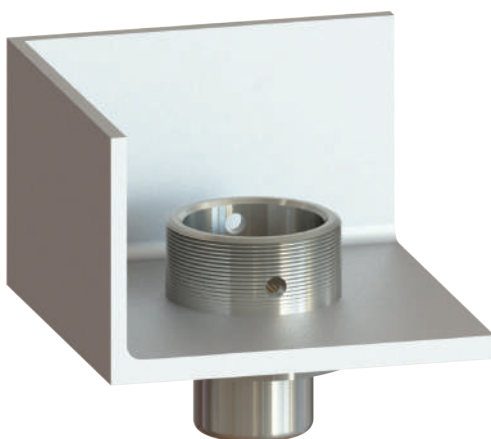
	Certificate Number	Standards
	IMQ 13 ATEX 030X	EN 60079-0:2012+A11:2013 EN 60079-7:2015 EN 60079-31:2014
	IECEx IMQ 14.0003X	IEC 60079-0:2011 Edition:6 IEC 60079-31:2013 Edition:2 IEC 60079-7:2015 Edition:5
	№ TC RU C-TR.AA87.B.00941	ГОСТ 31610.0-2014 ГОСТ IEC 60079-1:2013 ГОСТ IEC 60079-31:2013

-For more information see our webpage.

* The standard marking consists ATEX & IECEx only. Marking acc. to other standards on request.

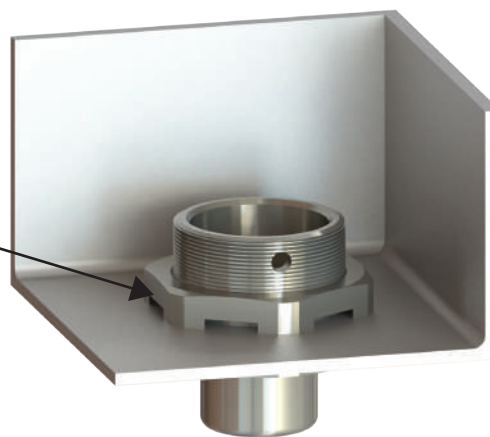


Threaded Hole



Non-Threaded Hole

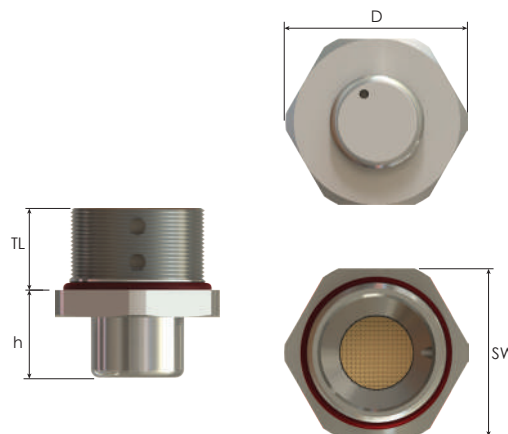
Special Lock Nut
for Drain Plug



Order Coding				
Part Number	Material	Seal	-	Lock Nut
Mandatory	Mandatory	Mandatory	-	Option
See table	B Brass BN Brass Nickel Plated X Stainless steel 316L	S Silicone	-	L Lock Nut
Example				
BDRV-1M	BN		-	

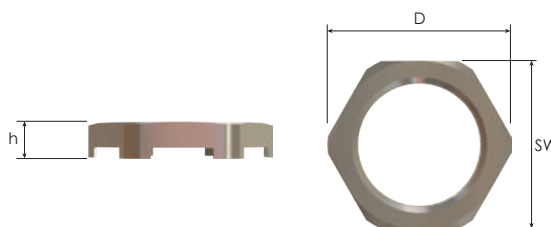
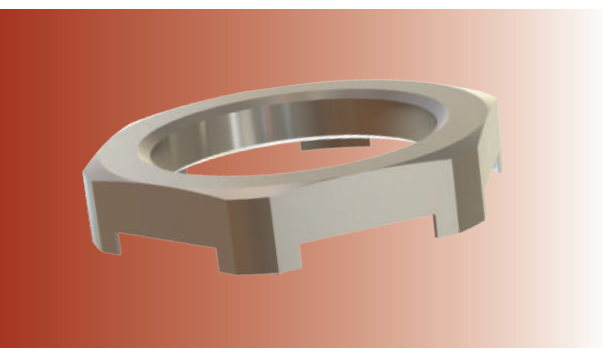
VIRGO

Drain Plugs Ex e applications



Thread Type METRIC acc. to ISO 965-3					
Outer Thread Size (Male)	Outer Thread Length	Spanner Width	Outer Ø	Height	Part Number
	TL mm	SW mm	D2 mm	h mm	
M20x1,5	15,0	25	27,5	16,0	BDRV-1M
M25x1,5	15,0	30	33,0	16,0	BDRV-2M

Thread Type NPT acc. to ANSI ASME B1.20.1					
Outer Thread Size (Male)	Outer Thread Length	Spanner Width	Outer Ø	Height	Part Number
	TL mm	SW mm	D2 mm	h mm	
NPT 1/2"	16,0	25	27,5	16,0	BDRV-1N
NPT 3/4"	16,0	30	33,0	16,0	BDRV-2N



Special Lock Nuts for Drain Plugs

Inner Thread Size (Female)	Spanner Width	Outer Ø	Height	Part Number
	SW mm	D2 mm	h mm	
M20x1,5	25	27,5	5,0	BDRL-03
M25x1,5	30	33,0	5,0	BDRL-04
NPSL 1/2"	25	27,5	5,0	BDRLN-03
NPSL 3/4"	30	33,0	5,0	BDRLN-04